

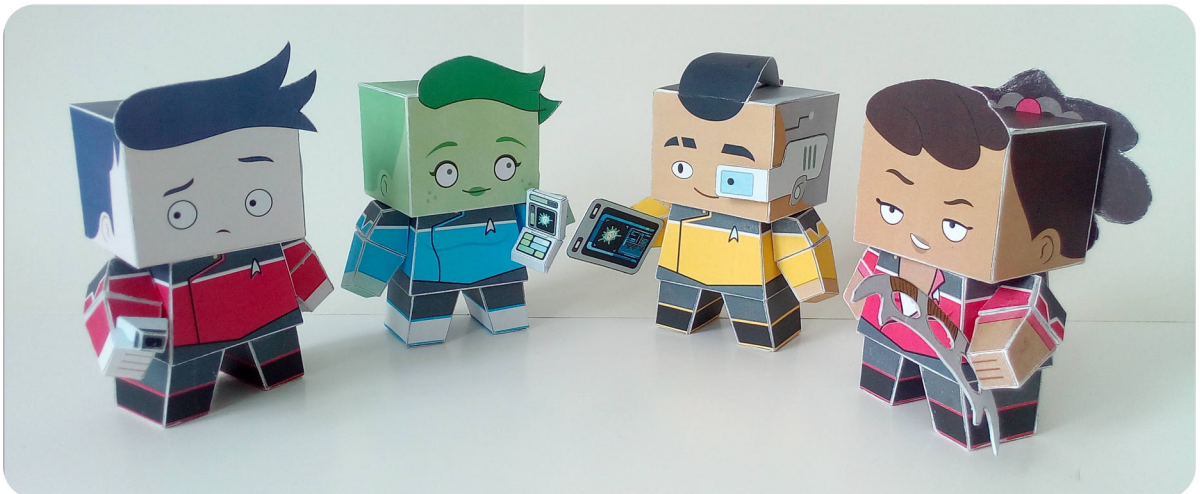
LOWER DECKS POPFOLD

COMPUTER

SYSTEM

325 799857

PURGE



INSTRUCTIONS

COMPUTER

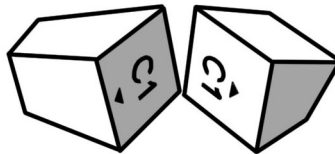
Print the desired pages on to light card or heavy paper. I recommend around 130gsm Matt Photopaper with printer quality set to high. If you have to use standard paper, I usually roughly cut around the pieces and glue them to card using a glue stick like Pritt.

SYSTEM

With scissors or a scalpel and steel ruler, carefully cut out each piece, and score fold lines with a blunt point like a pin, old, dry ball-point pen or the back of a scalpel blade.

Pre-fold all folds and tabs partly to check that they are all scored (I always miss at least one) and partly to make assembling the folded part easier. Glue tabs into place. I recommend a high tack PVA paper-craft glue with a precision nozzle available in any craft shop. Allow the parts to dry for a few minutes before sticking to each other.

When attaching the parts, check for the letter and the arrow.
Match the letter and the direction of the arrow like so:



Whilst legs are labelled, in this particular instance they can actually be swapped around for a 'legs together' pose. The Phaser comes in full handle to mount on the waist and half-handle to fix to the hand. Rutherford's hair is intended to be curved gently over and tacked at the back (see photos).

325 799857

Whilst these figures are all my own work, they use the 'Pop Fold' design created by Calvin Lin. You can see all of his fantastic designs over on:

<http://www.cubefold-craft.com/>

He also has Kelvin timeline Kirk and Spock and much nicer instructions than these.

If you have any comments on this file specifically then I can be reached at:

wayne_peters@hotmail.co.uk

PURGE

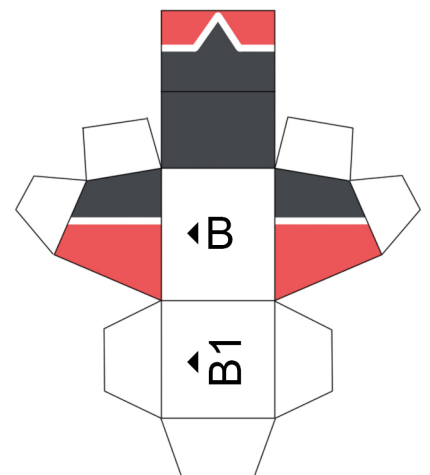
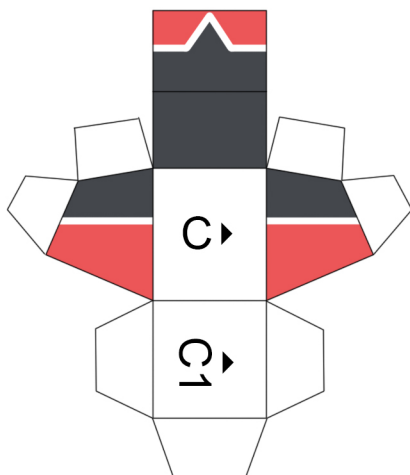
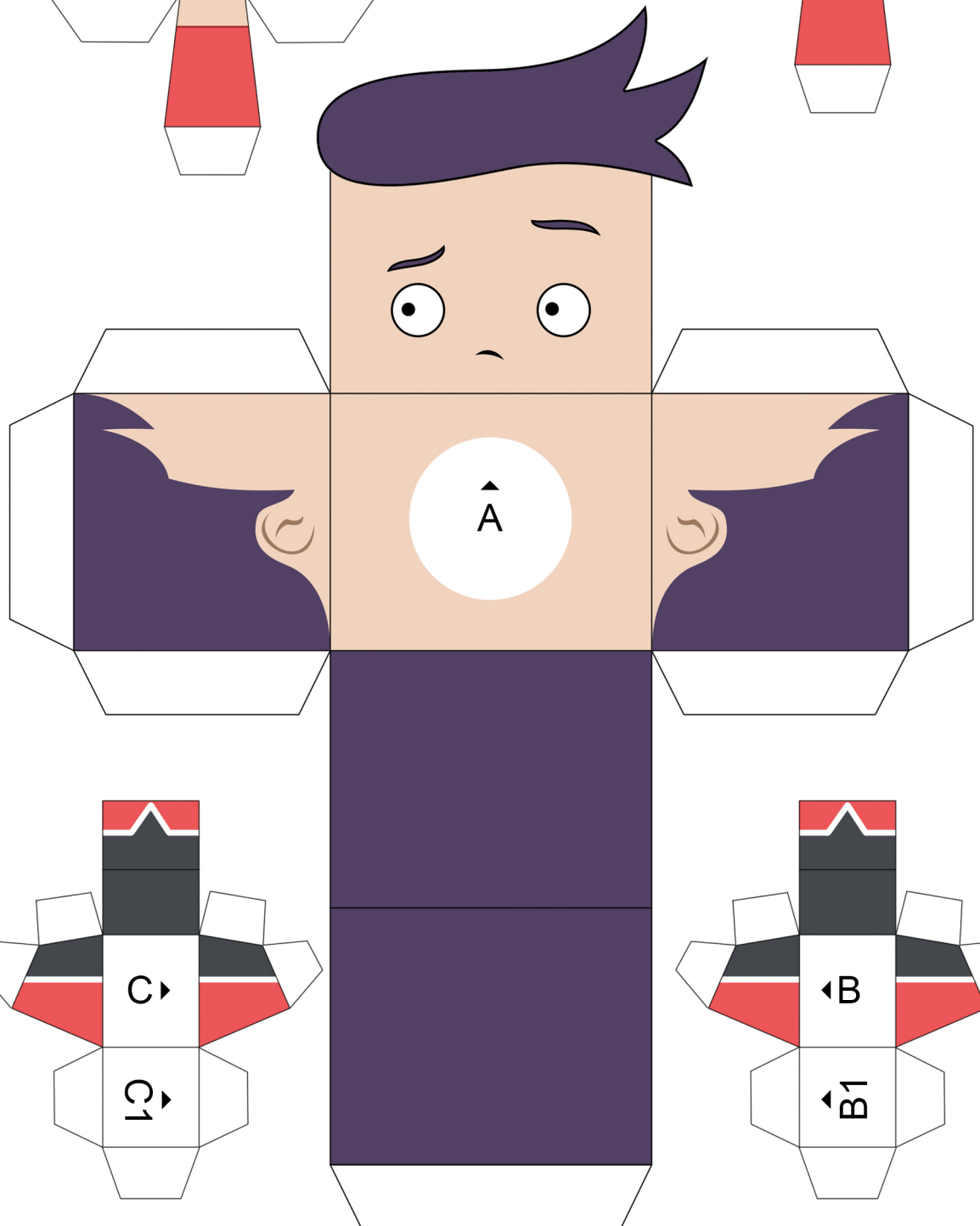
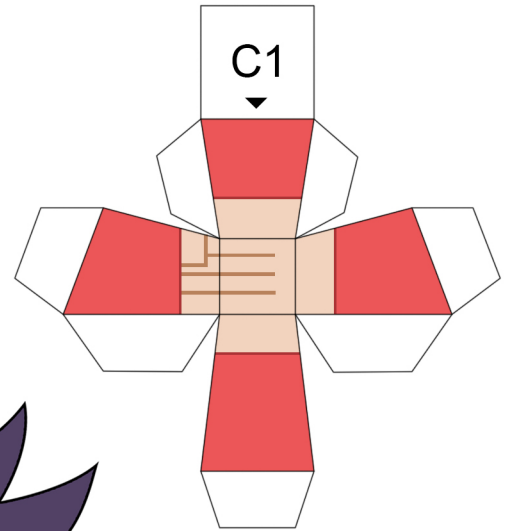
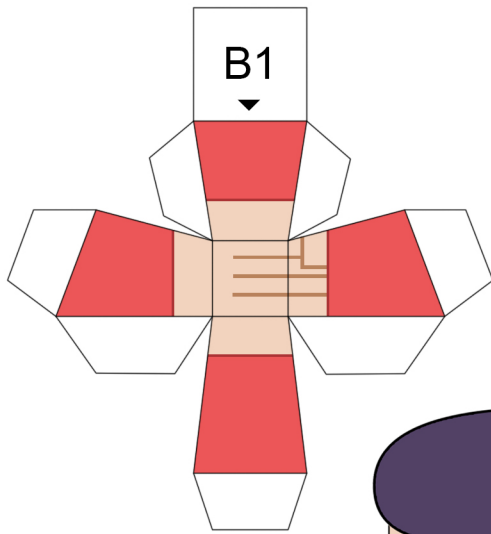
Star Trek and Lower Decks and the characters, Ensign Boimler, Ensign Mariner, Ensign Rutherford and Ensign Tendi are all copyright of CBS Television and no infringement is intended. These are essentially fan art and are not to be sold or otherwise profited from.

COMPUTER

SYSTEM

325 799857

PURGE

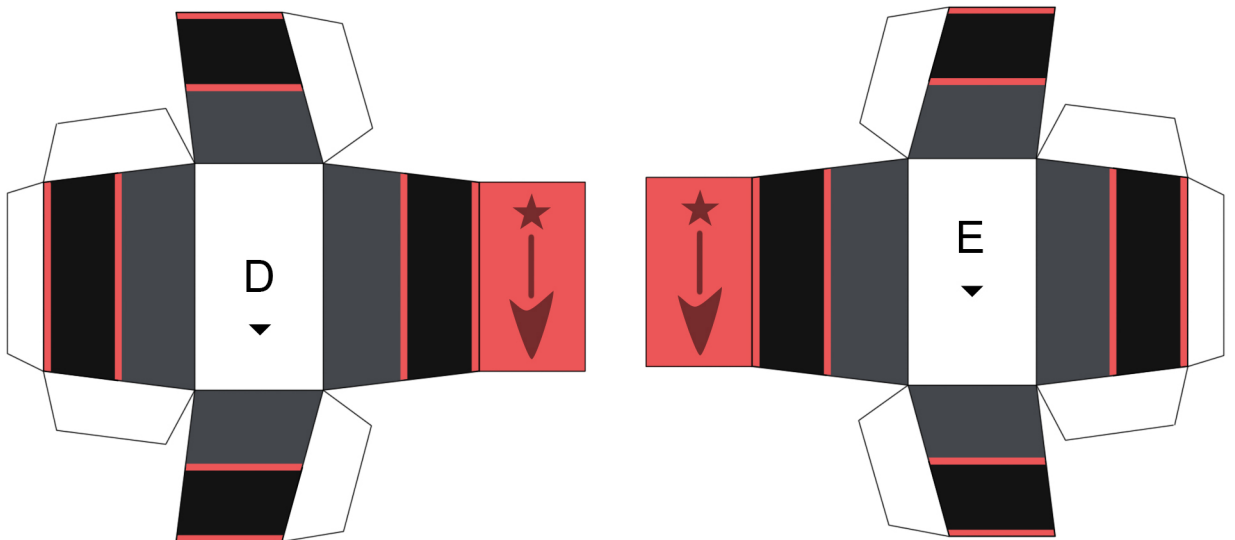
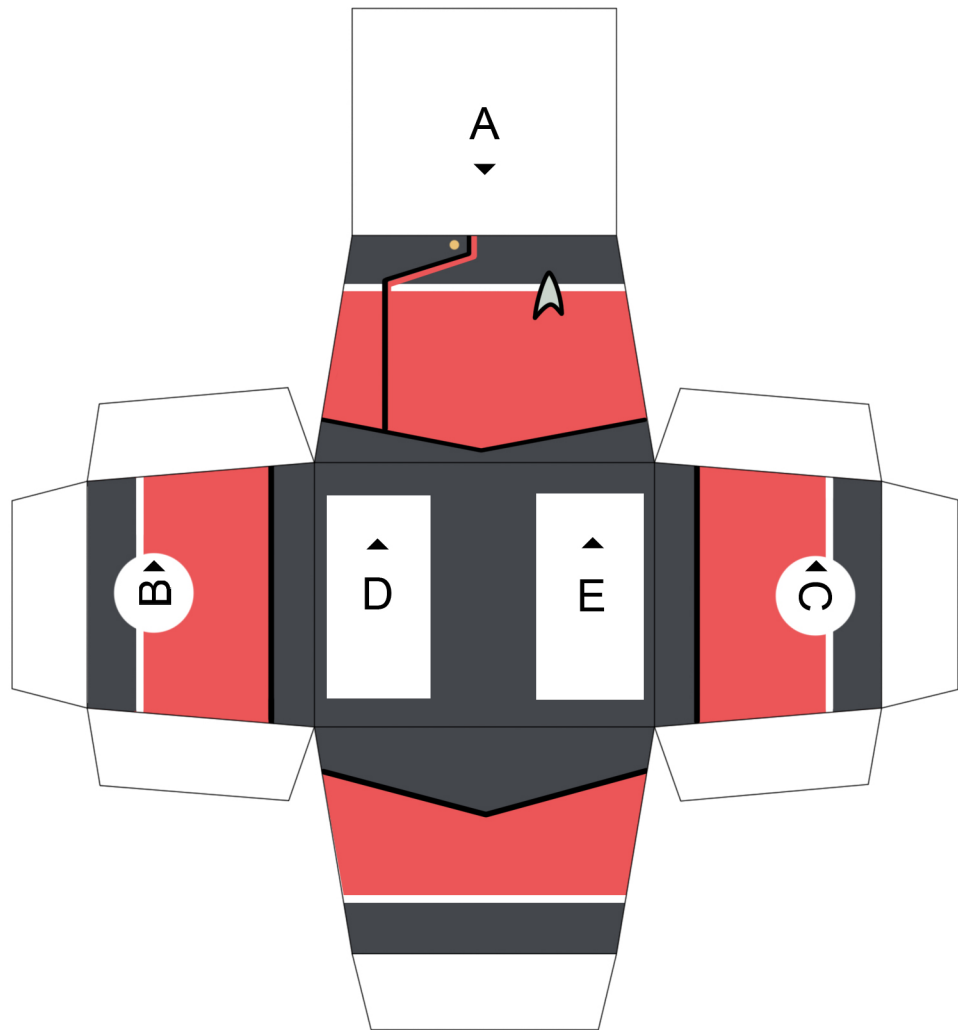


COMPUTER

SYSTEM

325 799857

PURGE



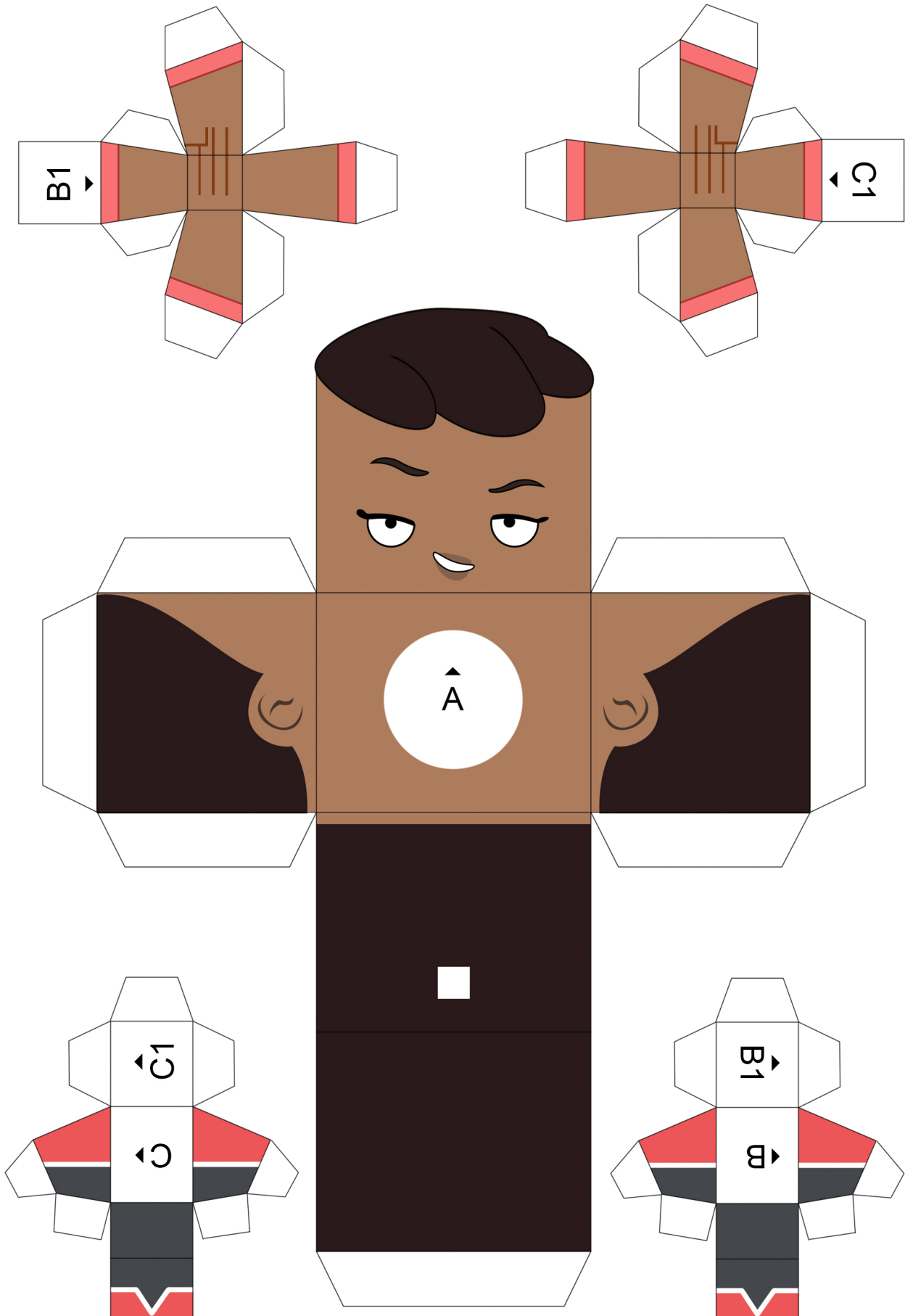
ENSIGN MARINER 01

COMPUTER

SYSTEM

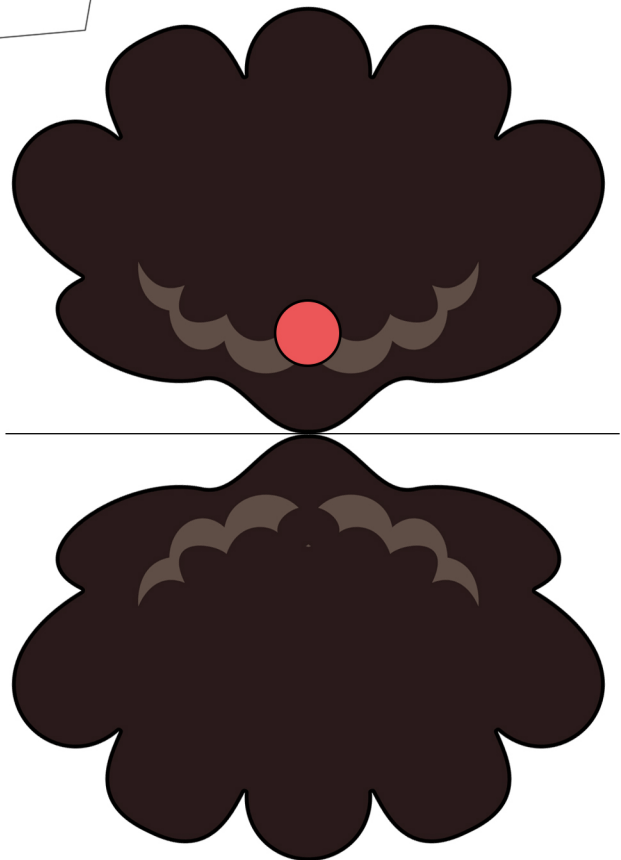
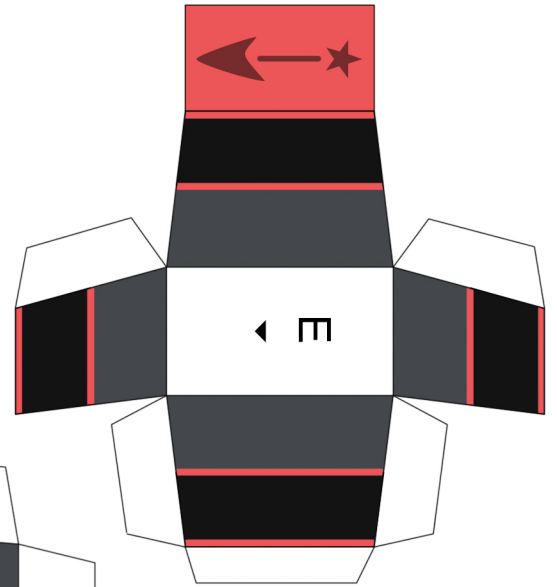
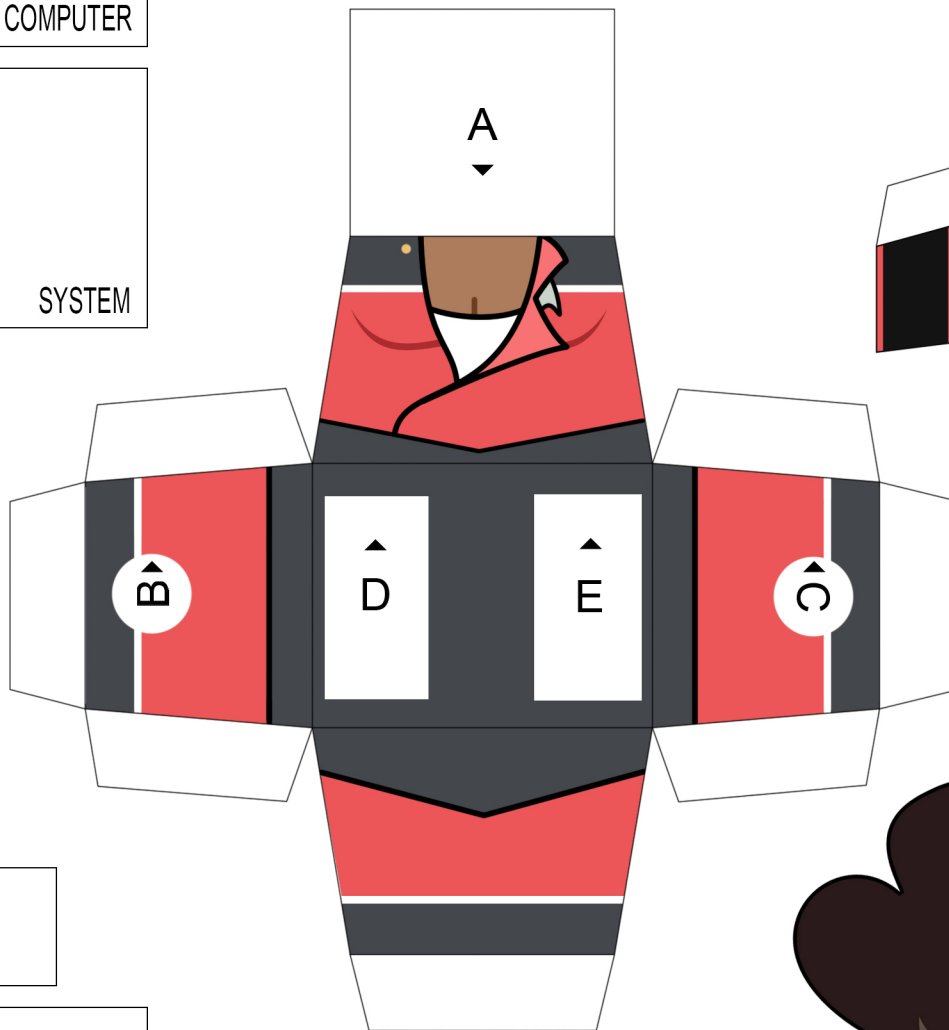
325 799857

PURGE



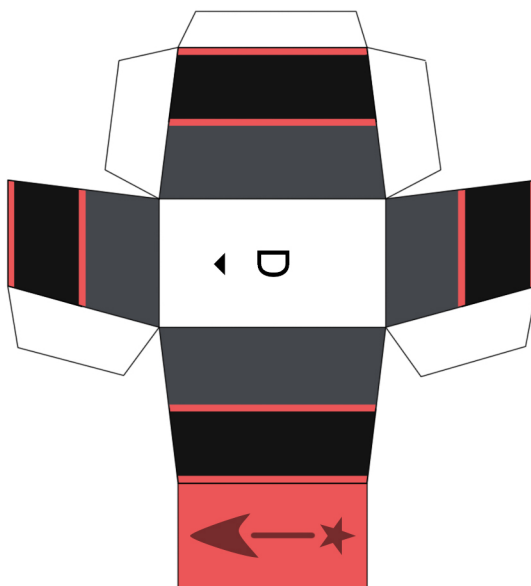
COMPUTER

SYSTEM



325 799857

PURGE

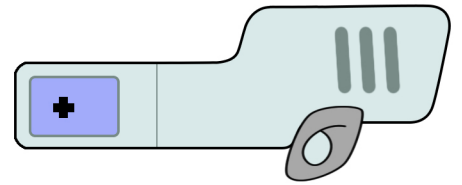
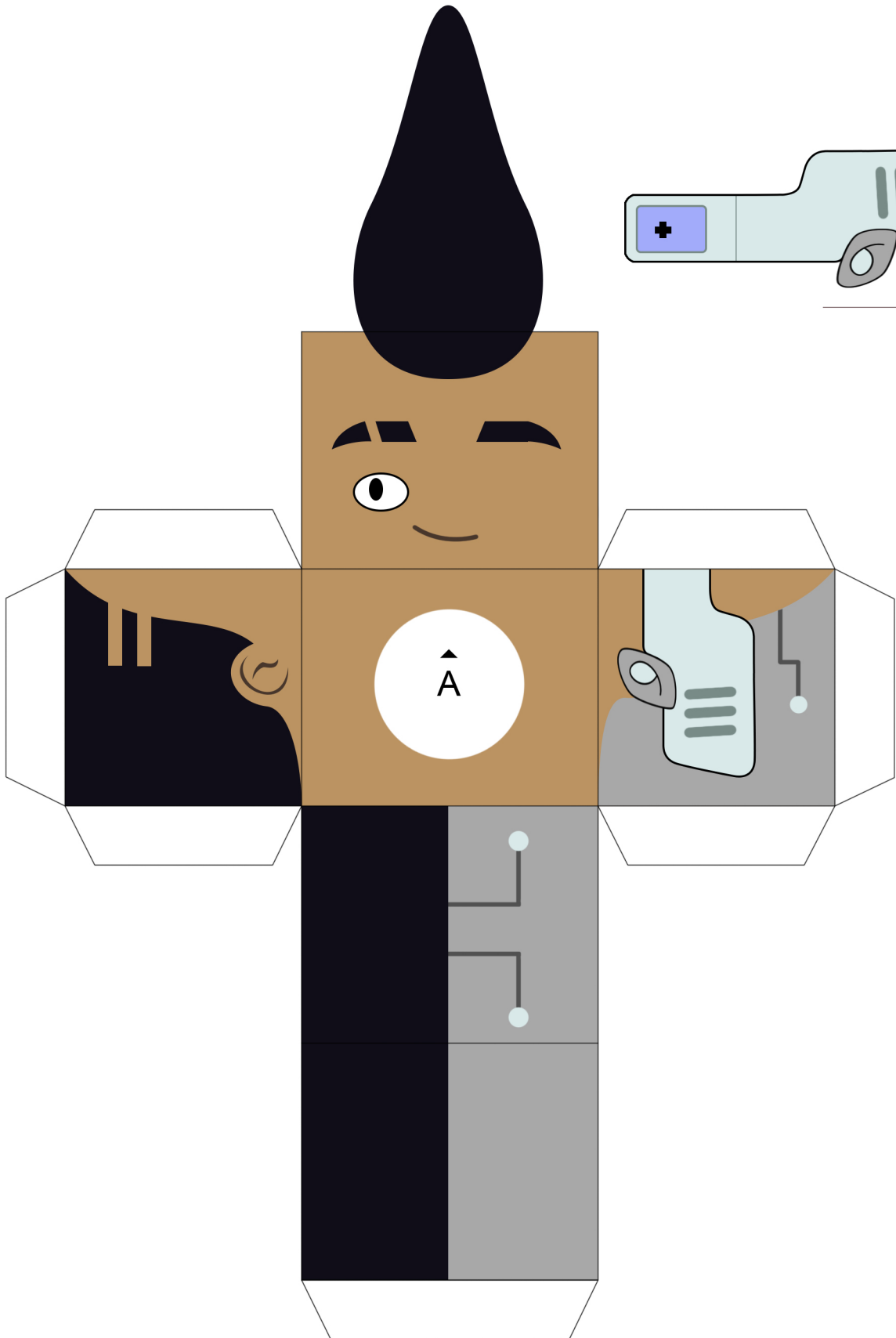


COMPUTER

SYSTEM

325 799857

PURGE

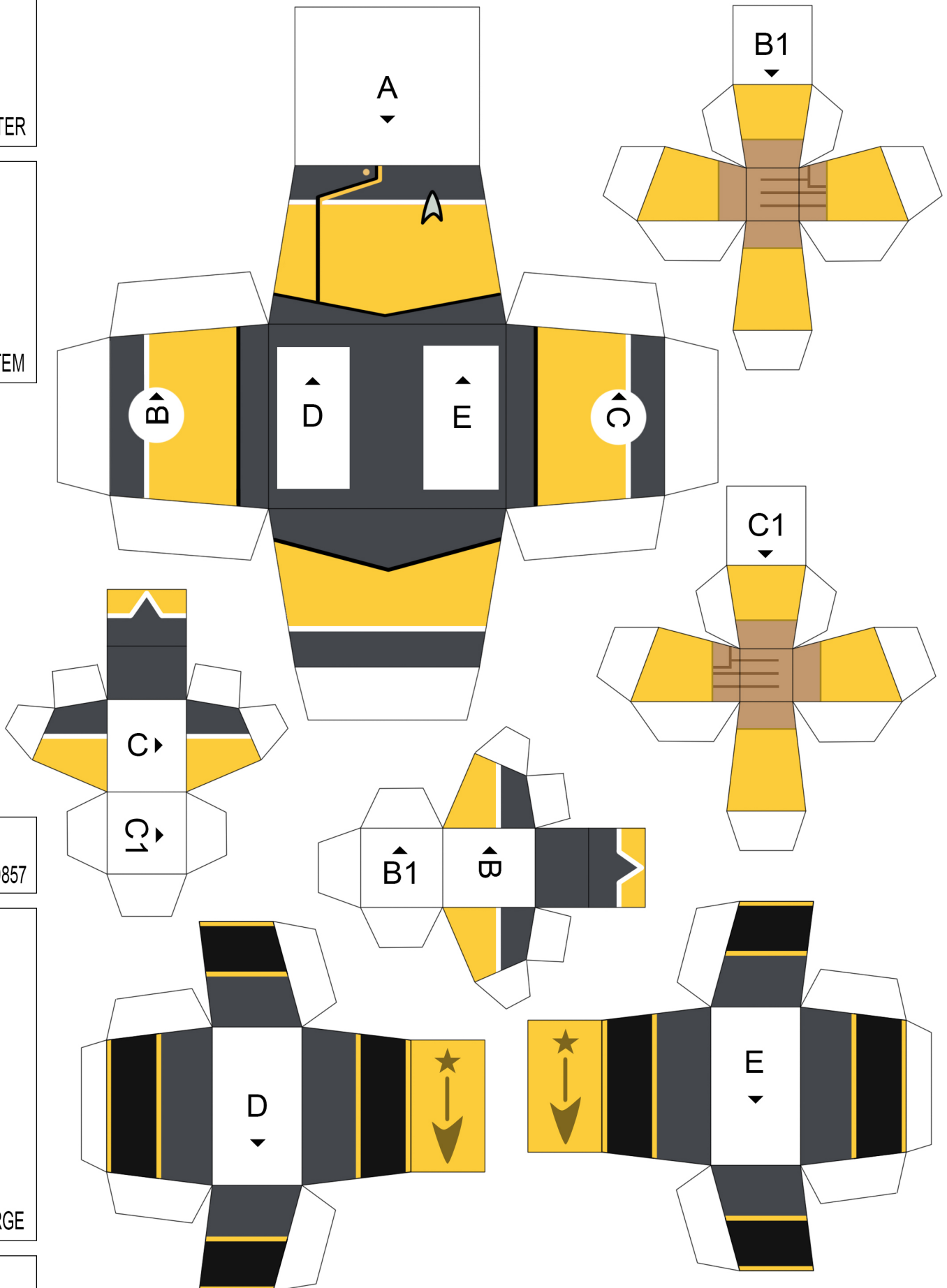


COMPUTER

SYSTEM

325 799857

PURGE

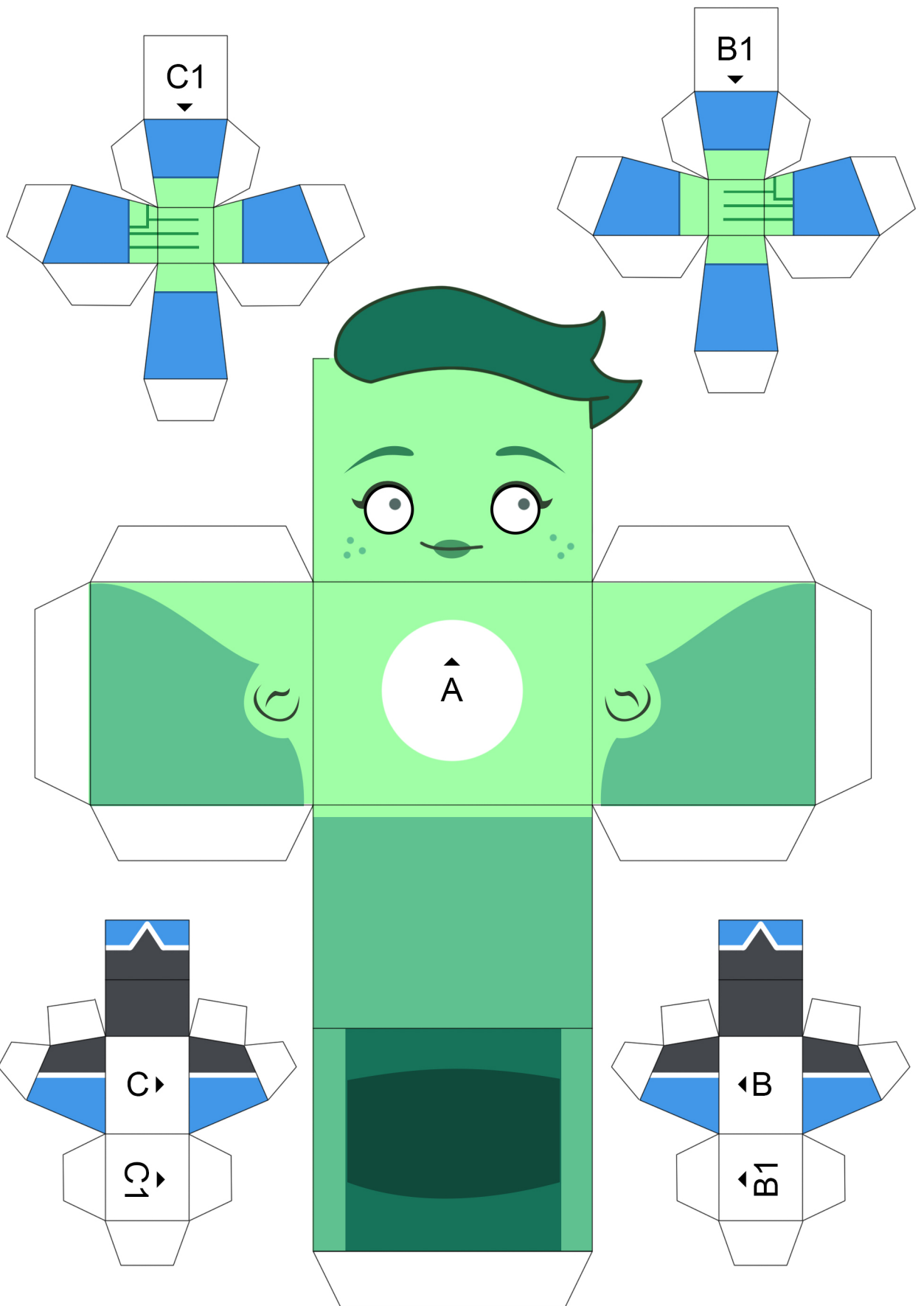


COMPUTER

SYSTEM

325 799857

PURGE

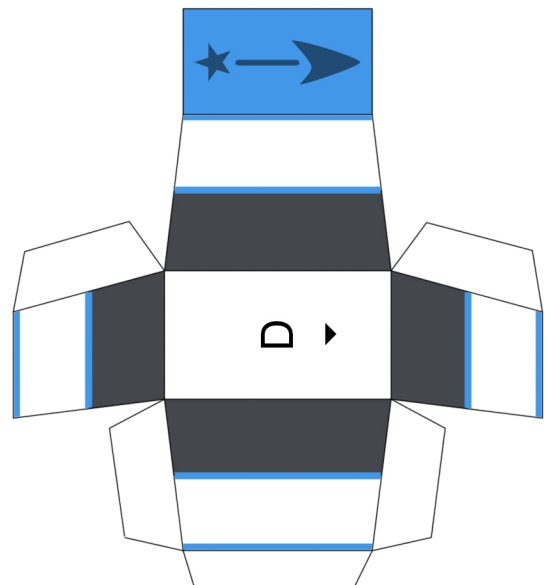
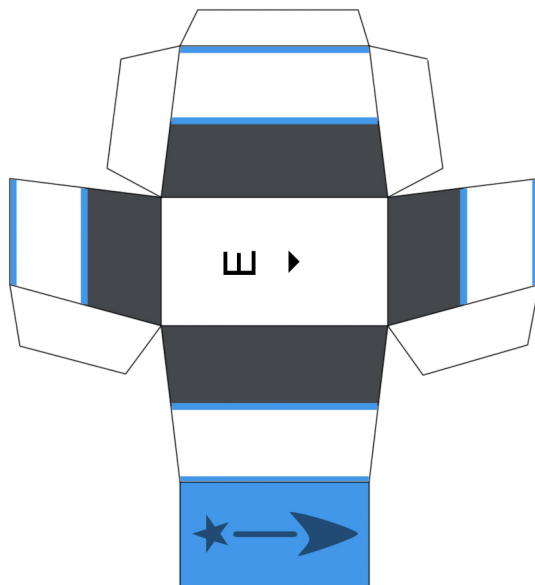
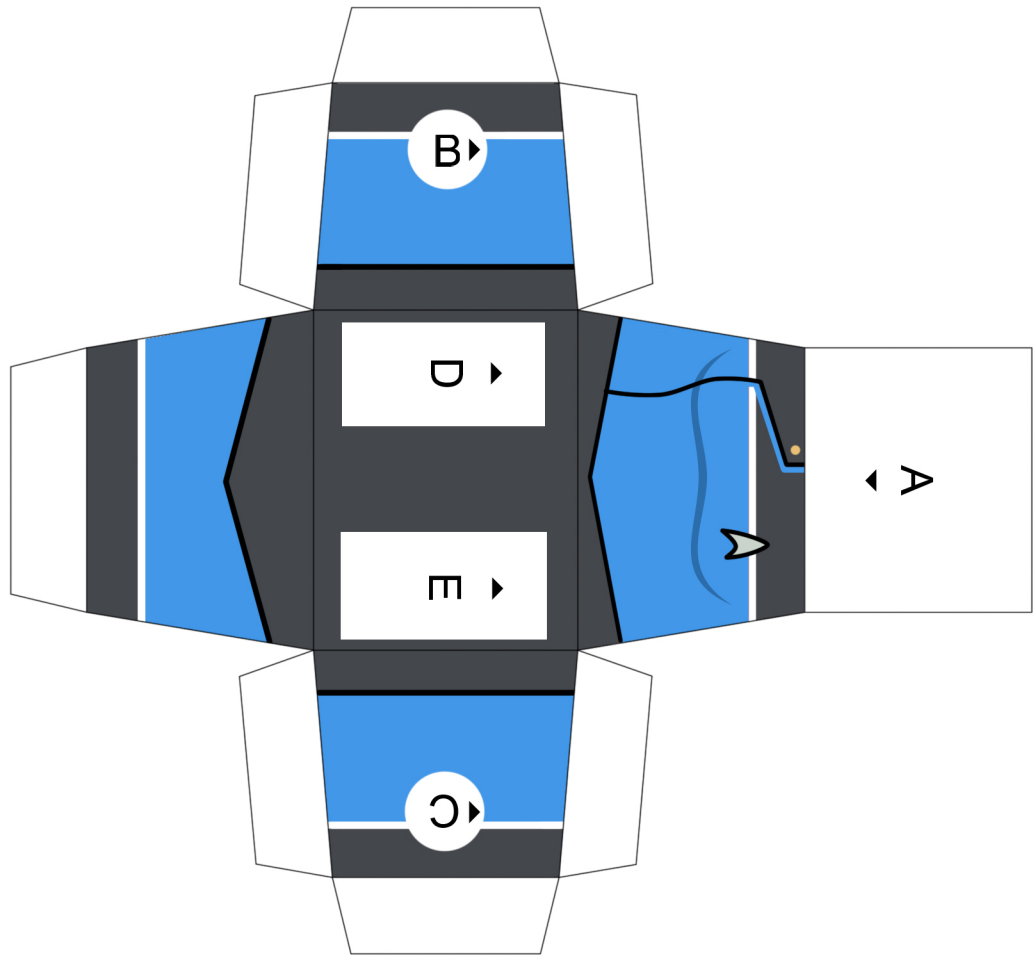


COMPUTER

SYSTEM

325 799857

PURGE



EQUIPMENT

COMPUTER

SYSTEM

325 799857

PURGE

